

CHURCH HISTORY

THEN TO NOW

33AD-325



476-799



1054-1299



1521-1610



1800-2015



325-476

800-1054

1300-1520

1610-1800

CHURCH HISTORY

SCIENCE AND THE BIBLE

33AD-325



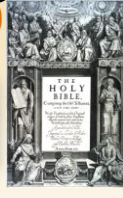
476-799



1054-1299



1521-1610



1800-2015



325-476

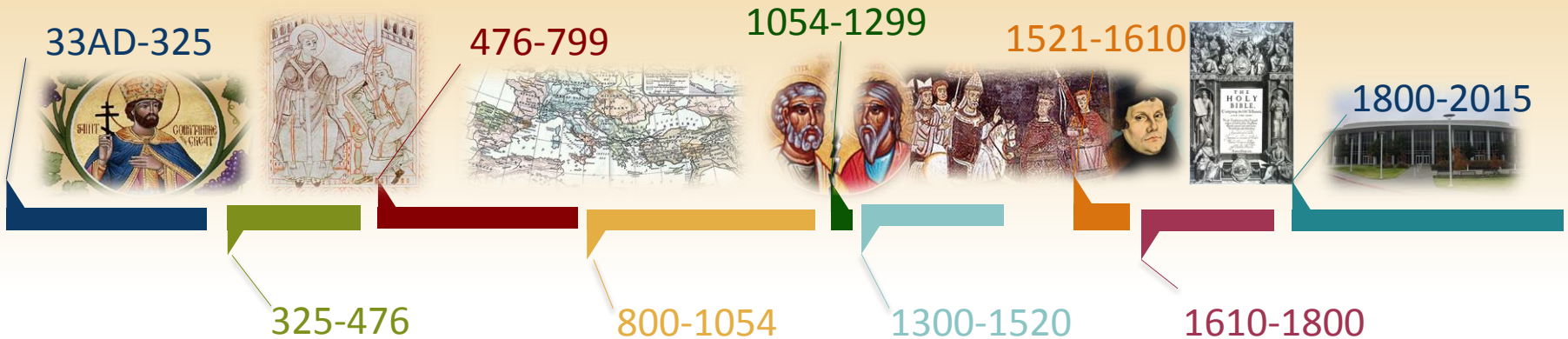
800-1054

1300-1520

1610-1800

CHURCH HISTORY

SCIENCE AND THE BIBLE



CHURCH HISTORY

THEN TO NOW

33AD-325



476-799



1054-1299



1521-1610



1800-2015



325-476

800-1054

1300-1520

1610-1800

Biblical-Literacy.com

© Copyright 2015 by Mark Lanier. Permission hereby granted to reprint this document in its entirety without change, with reference given, and not for financial profit.



WHAT IS YOUR BIGGEST

WHAT IS YOUR BIGGEST
PERSONAL CHALLENGE TO

WHAT IS YOUR BIGGEST
PERSONAL CHALLENGE TO
HAVING FAITH IN GOD?

WHAT IS YOUR BIGGEST
PERSONAL CHALLENGE TO
HAVING FAITH IN GOD?

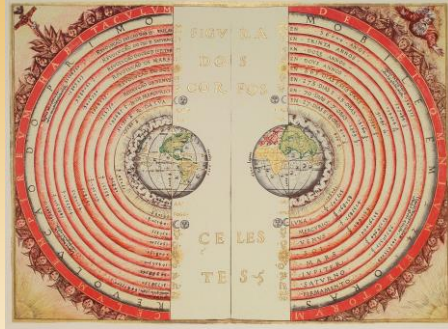
Science and the Bible

PERSONAL CHALLENGE TO
HAVING FAITH IN GOD?

Science and the Bible

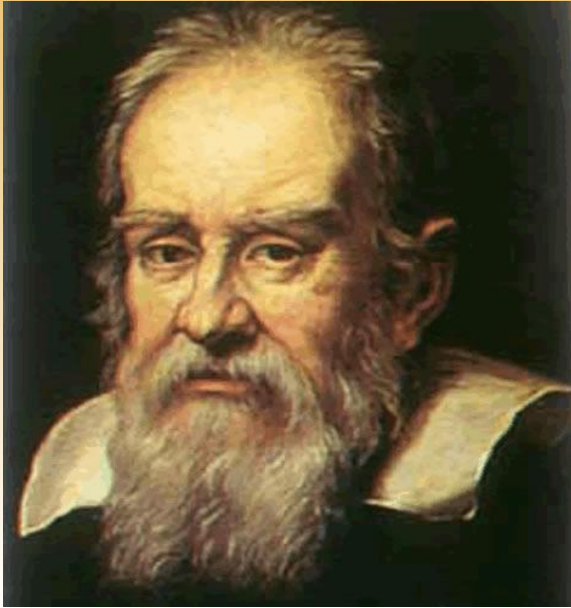
Science and the Bible

Science and the Bible

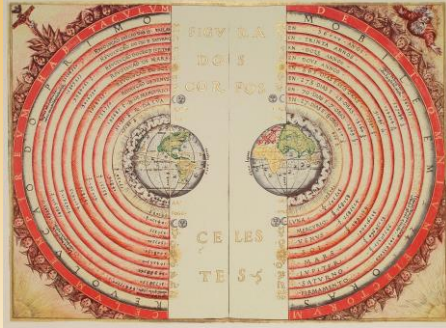


Galileo Galilei
(1564-1642)

Science and the Bible

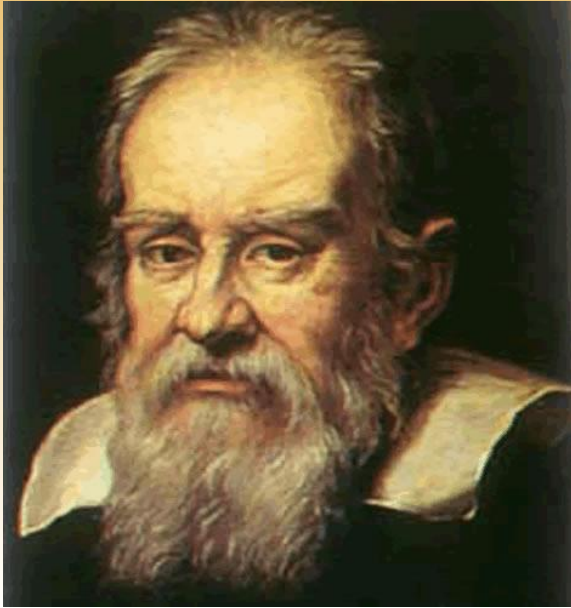


Galileo Galilei
(1564-1642)

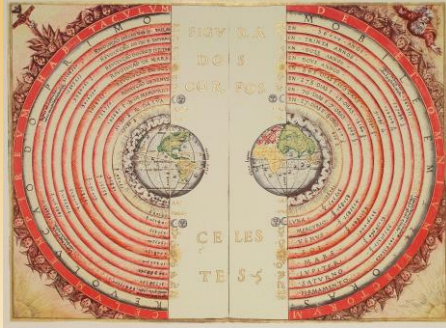


Geocentrism

Science and the Bible



Galileo Galilei
(1564-1642)

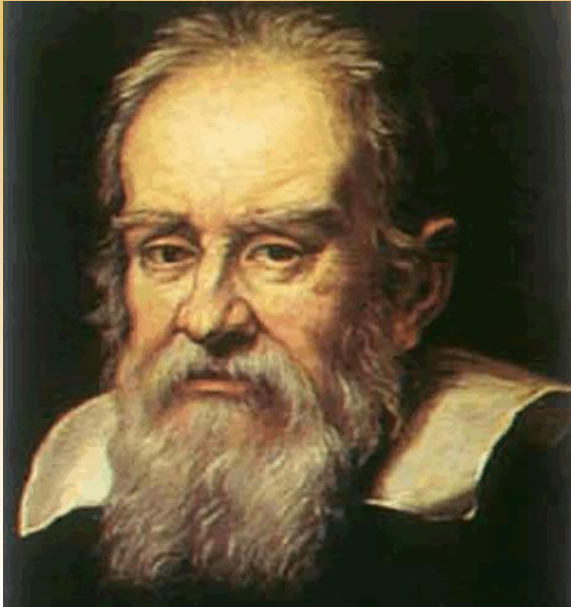


Geocentrism

or heliocentrism

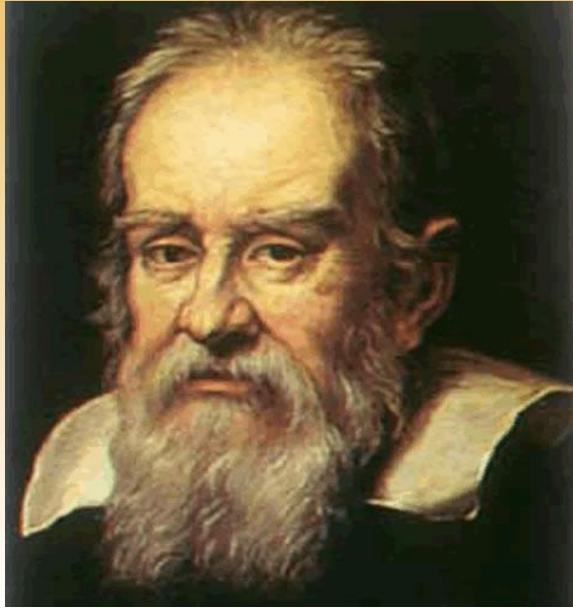


Science and the Bible



Galileo Galilei
(1564-1642)

Science and the Bible

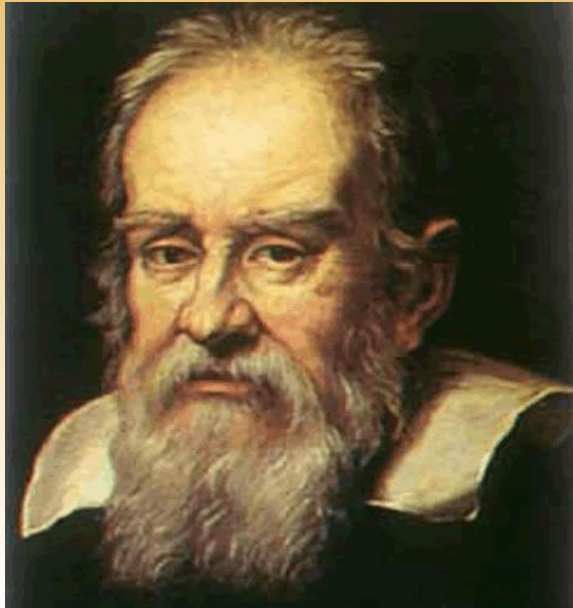


Galileo Galilei
(1564-1642)



Pope Urban VIII

Science and the Bible



Galileo Galilei
(1564-1642)

Eccl. 1:5 -“The sun
rises, and the sun
goes down, and
hastens to the
place where it
rises”



Pope Urban VIII

PERSONAL CHALLENGE TO
HAVING FAITH IN GOD?

Science and the Bible

WHAT IS YOUR BIGGEST
PERSONAL CHALLENGE TO
HAVING FAITH IN GOD?

Science and the Bible

WHAT IS YOUR BIGGEST
PERSONAL CHALLENGE TO
HAVING FAITH IN GOD?

Science and the Bible

TRUTH

WHAT IS YOUR BIGGEST
PERSONAL CHALLENGE TO
HAVING FAITH IN GOD?

Science and the Bible

TRUTH IS

WHAT IS YOUR BIGGEST
PERSONAL CHALLENGE TO
HAVING FAITH IN GOD?

Science and the Bible

TRUTH IS GOD'S

WHAT IS YOUR BIGGEST
PERSONAL CHALLENGE TO
HAVING FAITH IN GOD?

Science and the Bible

TRUTH IS GOD'S TRUTH

TRUTH

TRUTH

TRUTH:

TRUTH:

- Helps inform our understanding of God

TRUTH:

- Helps inform our understanding of God (“Theology”)

TRUTH:

- Helps inform our understanding of God (“Theology”)
- Helps inform our understanding of Scripture (God’s word)

Early Church struggle



Early Church struggle

■ Background



Early Church struggle



■ Background

■ Clement of
Alexandria

Early Church struggle



- Background

- Clement of Alexandria

- Tertullian

Early Church struggle

■ Background



Early Church struggle



■ Background

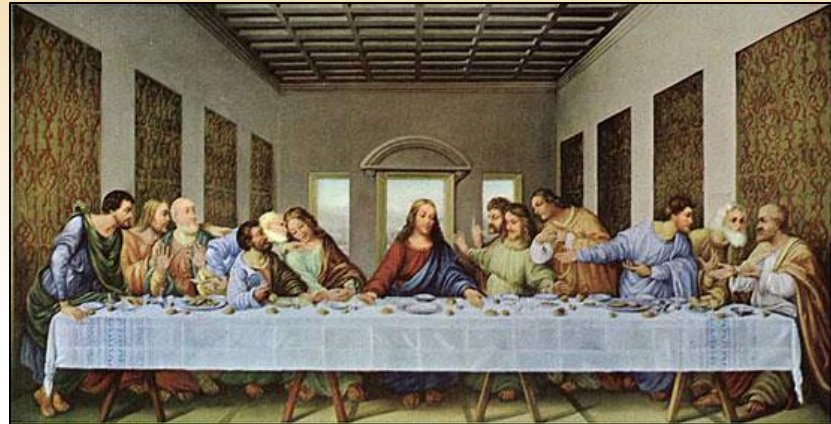
The earliest church
was a Jewish group

Early Church struggle



■ Background

The earliest church
was a Jewish group



Early Church struggle



■ Background

The earliest church
was a Jewish group

Early Church struggle



■ Background

The earliest church
was a Jewish group

but it was intended
for the world

Early Church struggle

■ Background



Early Church struggle



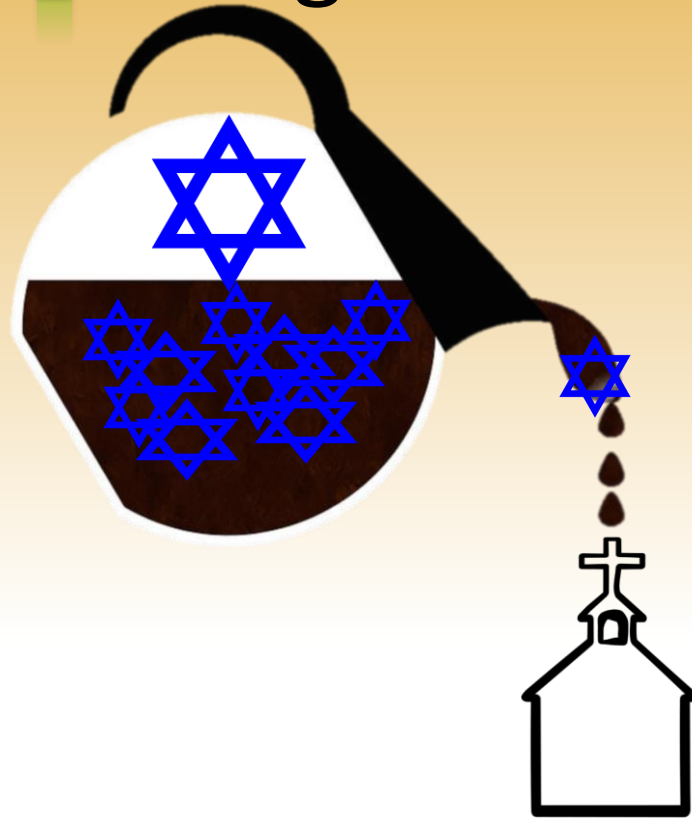
■ Background



Early Church struggle



■ Background



Early Church struggle



■ Background



Early Church struggle



■ Background



Early Church struggle



■ Background



Early Church struggle



■ Background



Early Church struggle



■ Background



Early Church struggle



■ Background



Early Church struggle



■ Background



Early Church struggle



■ Background



Early Church struggle



■ Background



Early Church struggle



■ Background



Early Church struggle



■ Background



Church leadership
and intelligentsia are
Jewish

Early Church struggle



Church leadership
and intelligentsia are
Jewish



Early Church struggle



Backg



Church leadership
and intelligentsia are
Jewish

**JEWISH
TRAGEDY**

Early Church struggle



Backg



Church leadership
and intelligentsia are
Jewish



Early Church struggle



■ Background



Early Church struggle



■ Background



Church leadership
and intelligentsia are
Jewish

Early Church struggle



■ Background



Church leadership
and intelligentsia are
Jewish

Early Church struggle



■ Background



Church leadership
and intelligentsia are
Jewish

Early Church struggle



■ Background



Church leadership
and intelligentsia are
Jewish

Early Church struggle



■ Background



Church leadership
and intelligentsia are
Jewish

Early Church struggle



■ Background



Church leadership
and intelligentsia are
Jewish

Early Church struggle



■ Background



Church leadership
and intelligentsia are
Jewish

Early Church struggle



■ Background



Church leadership
and intelligentsia are
Jewish

Early Church struggle



■ Background



Church leadership
and intelligentsia are
Jewish

Early Church struggle



■ Background



Church leadership
and intelligentsia are
Jewish

Early Church struggle



■ Background



Church leadership
and intelligentsia are
Jewish

Early Church struggle



■ Background



Church leadership
and intelligentsia are
Jewish

Early Church struggle



■ Background



Church leadership
and intelligentsia are
Jewish

Early Church struggle



■ Background



Church leadership
and intelligentsia are
Jewish

Early Church struggle



■ Background



Church leadership
and intelligentsia are
Jewish

Early Church struggle



■ Background



Church leadership
and intelligentsia are
Jewish

Early Church struggle



■ Background



Church leadership
and intelligentsia are
~~Jewish~~

Early Church struggle



■ Background



Church leadership
and intelligentsia are

~~GREEK~~
~~Jewish~~

Early Church struggle

■ Background



EXAMPLE

Early Church struggle



■ Background



Irenaeus and
“recapitulation”

E



d
on"

E



d
on"

E



d
on"

Early Church struggle



Early Church struggle



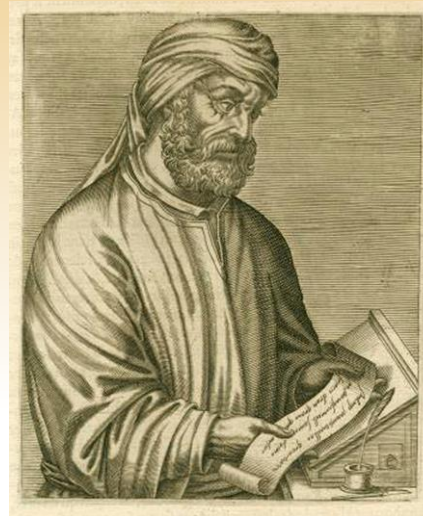
■ Clement of Alexandria



Early Church struggle



■ Clement of Alexandria



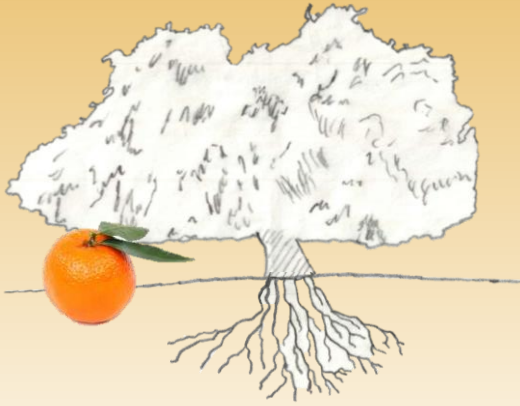
■ Tertullian

Early Church struggle

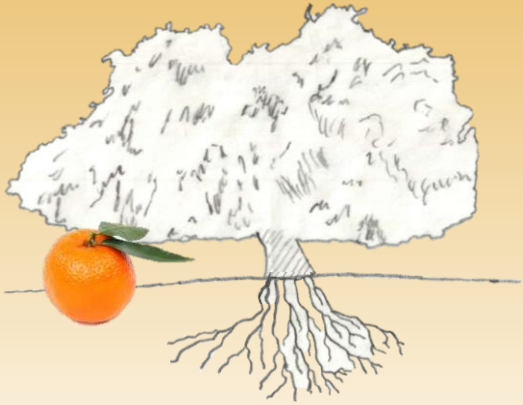


Where does this
leave us?

Fruit for Home



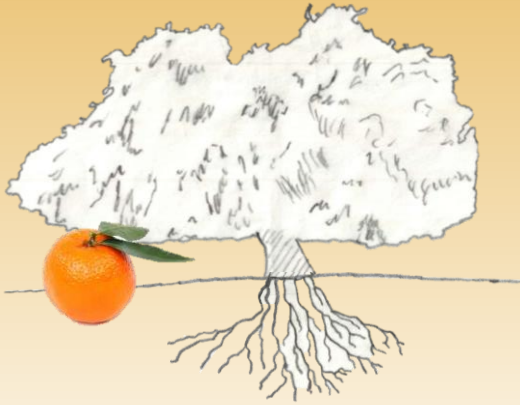
Fruit for Home



*"I know **whom** I have believed
and am persuaded that **he** is
able to keep that I've committed
to **him**..."*

- 2 Tim. 1:12

Fruit for Home

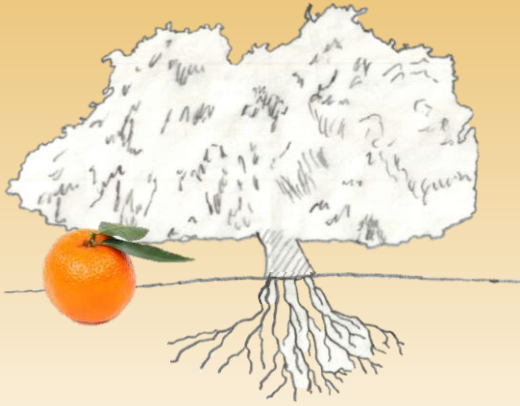


*"I know **whom** I have believed
and am persuaded that **he** is
able to keep that I've committed
to **him**..."*

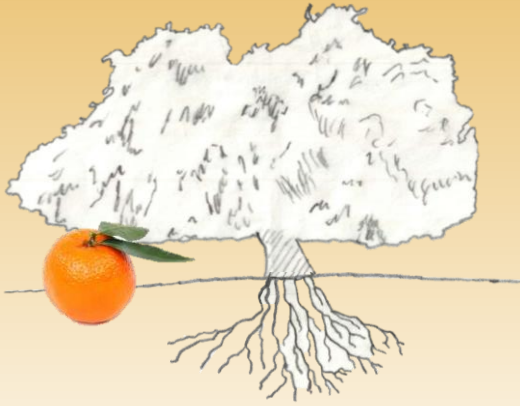
- 2 Tim. 1:12

**Remember
the POINT!**

Fruit for Home

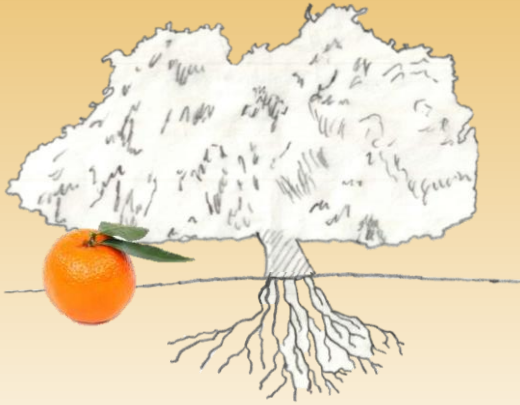


Fruit for Home



*"I am the way, the
truth, and the life"
Jn 14:6*

Fruit for Home

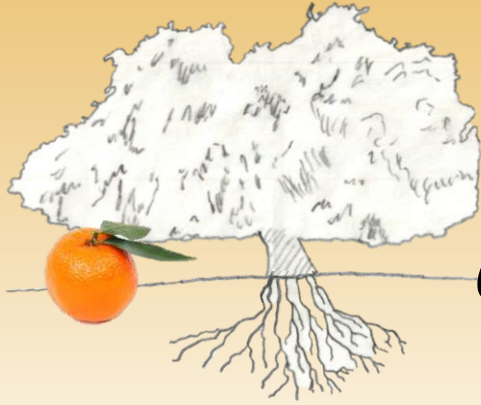


*"I am the way, the
truth, and the life"*

Jn 14:6

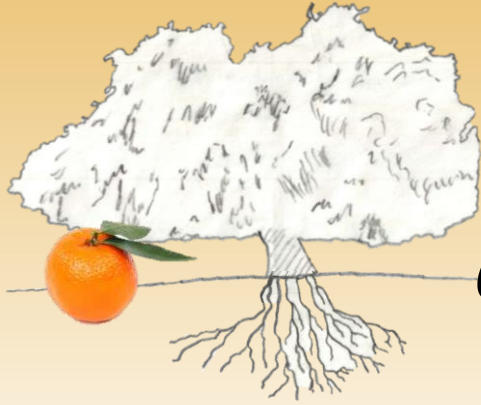
**I will seek
his truth**

Fruit for Home



“What can be known about God is plain to them, because God has shown it to them. For his invisible attributes, namely, his eternal power and divine nature, have been clearly perceived, ever since the creation of the world, in the things that have been made”—Rom. 5:21

Fruit for Home



**I relish
learning of
God**

“What can be known about God is plain to them, because God has shown it to them. For his invisible attributes, namely, his eternal power and divine nature, have been clearly perceived, ever since the creation of the world, in the things that have been made”—Rom. 5:21



Committing the Word of God
to memory in 2015

**Next week: 1 John 1:1-2:24
(English Standard Version)**