

CHURCH HISTORY LITERACY

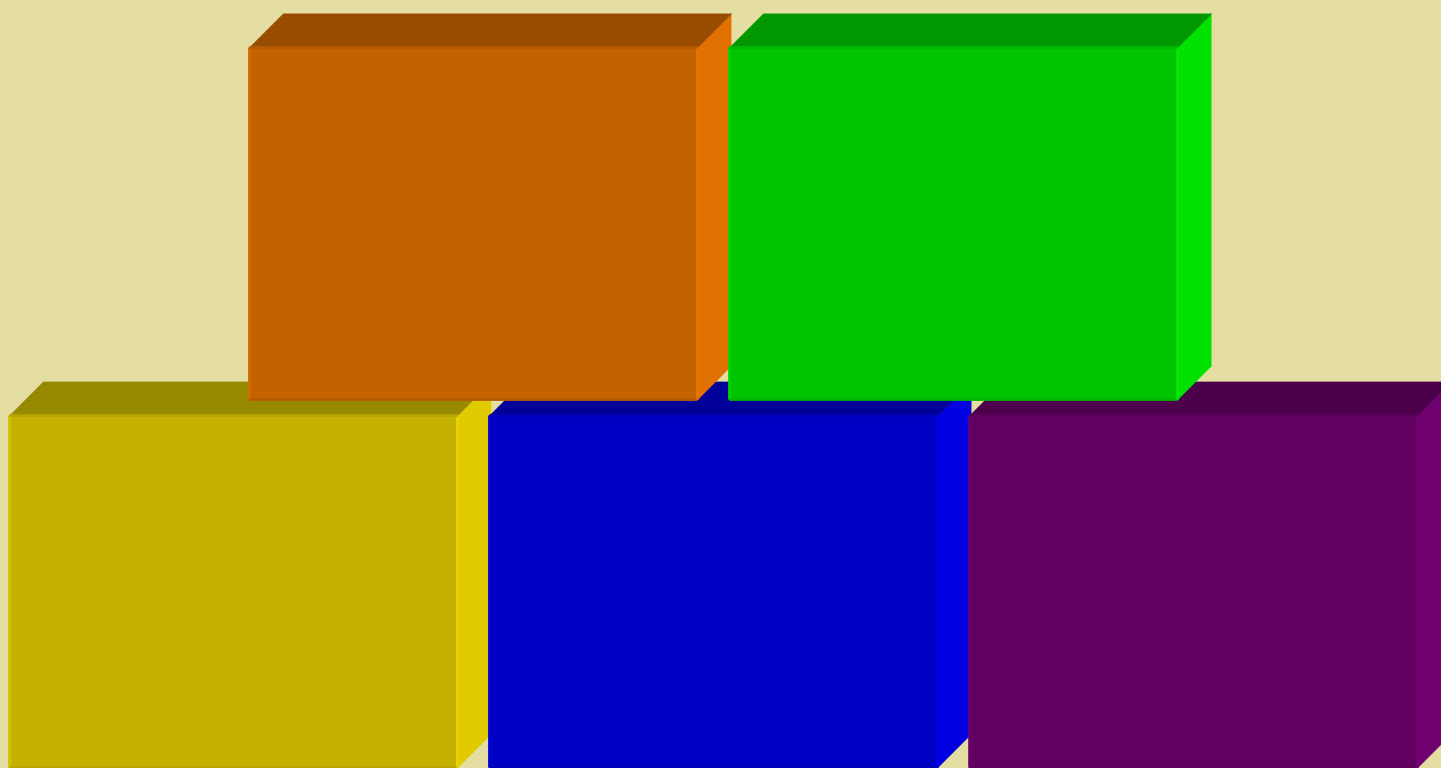
Fighting Over Jesus : How Much God, How Much Man?

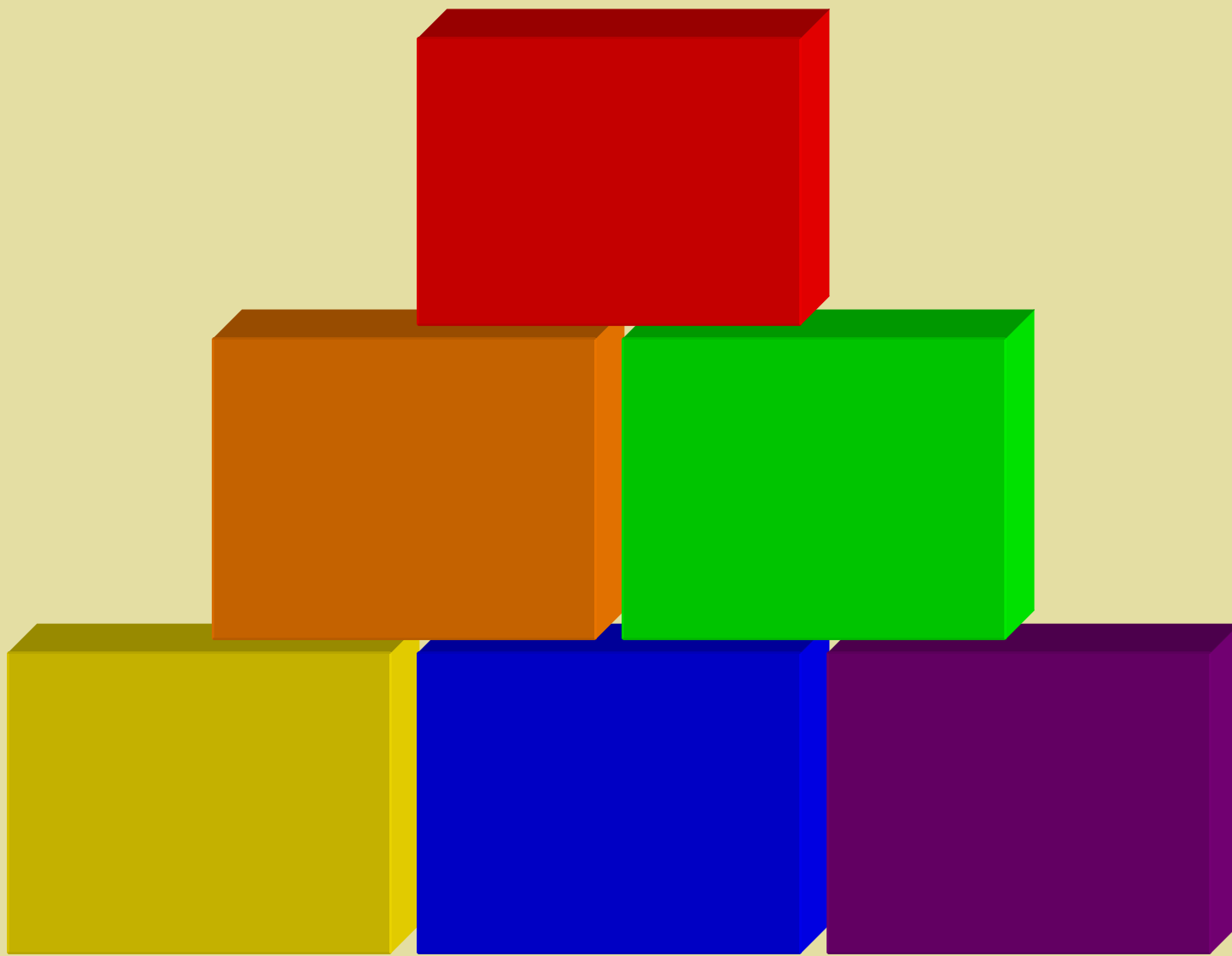
Lesson 31

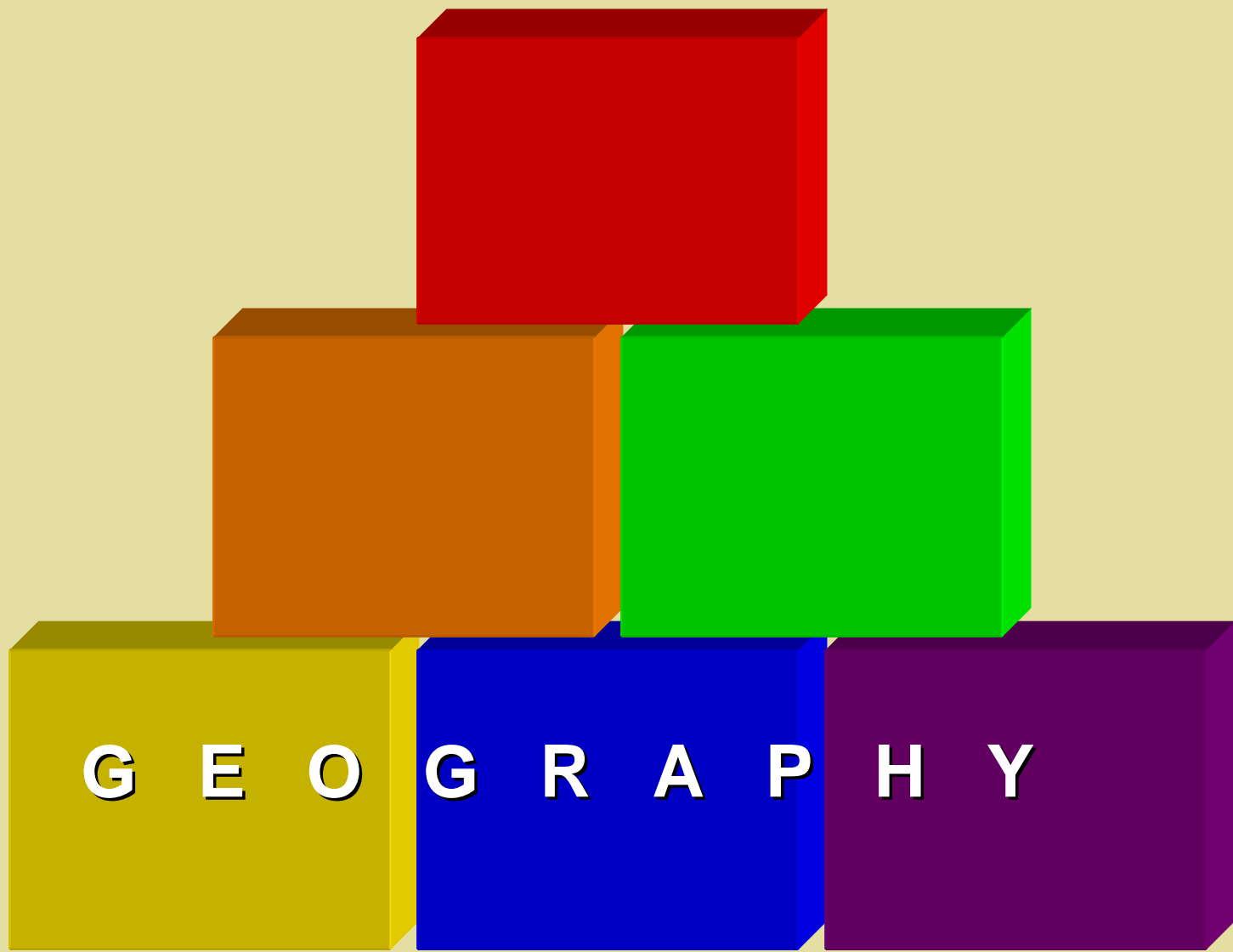
Biblical-Literacy.com

© Copyright 2006 by W. Mark Lanier. Permission hereby granted to reprint this document in its entirety without change, with reference given, and not for financial profit.











NATURE OF JESUS

G E O G R A P H Y



THIS WEEK

NATURE OF JESUS

G E O G R A P H Y









Jerusalem



“It seemed good to the Holy Spirit and to us not to burden you with anything beyond the following requirements” Acts 15:28



Jerusalem





Antioch



Jerusalem





Antioch

Jerusalem

**“The disciples were called Christians first
at Antioch” Acts 11:26**

A satellite map of the Eastern Mediterranean region, showing the coastlines of Europe, Asia, and Africa. The sea is a deep blue, and the land is a mix of green and tan. Two blue rectangular labels with white text and starburst icons are overlaid on the map. The label 'Antioch' is positioned over the coast of modern-day Turkey, and the label 'Jerusalem' is positioned over the land of modern-day Israel.

Antioch

Jerusalem

Rome



Jerusalem



Rome



Jerusalem



A satellite map of the Eastern Mediterranean region, showing the Italian Peninsula, the Aegean Sea, and the Levant. Three locations are highlighted with blue starburst icons and labels: Rome in Italy, Antioch on the coast of modern-day Syria, and Jerusalem in the West Bank of the Jordan River.

Rome

Antioch

Jerusalem

A satellite map of the Eastern Mediterranean region, showing the Italian Peninsula, the Balkans, the Middle East, and the surrounding seas. Four locations are highlighted with blue labels and starburst icons: Rome, Antioch, Jerusalem, and Alexandria.

Rome



Antioch



Jerusalem



Alexandria



A satellite map of the Mediterranean region, showing the Italian Peninsula, the Balkans, and the Middle East. A blue rectangular box is positioned over the Italian Peninsula, and a blue starburst icon is located to its right. Another blue rectangular box is positioned over the eastern coast of the Mediterranean, and a blue starburst icon is located to its right. A third blue rectangular box is positioned over the southern coast of the Mediterranean, and a blue starburst icon is located to its right. A fourth blue rectangular box is positioned over the northern coast of the Mediterranean, and a blue starburst icon is located to its right. A large blue rectangular box with the word "SEPTUAGINTA" in gold lettering is positioned in the center of the map.

Rome

SEPTUAGINTA

Antioch

Jerusalem

Alexandria





Rome

Antioch

Jerusalem

Alexandria



Rome

A satellite map of the Eastern Mediterranean region, showing the Italian Peninsula, the Balkans, and the Middle East. Four locations are marked with blue starburst icons and labeled in blue boxes: Rome (Italy), Constantinople (Istanbul, Turkey), Antioch (Syria), and Jerusalem (Israel). The map shows the Mediterranean Sea, the Black Sea, and the Red Sea. The land is green, and the water is blue. The sky is white with some clouds.

Constantinople

Antioch

Jerusalem





A satellite map of the Eastern Roman Empire, showing the Mediterranean Sea, the Balkans, and parts of North Africa and the Middle East. Five cities are marked with blue starburst icons and labeled in blue boxes: Rome, Constantinople, Antioch, Jerusalem, and Alexandria. The map shows the geographical context of these cities during the late Roman or Byzantine period.

Rome

Constantinople

Antioch

Jerusalem

Alexandria



A satellite map of the Eastern Roman Empire (Byzantine Empire) in the 5th century AD. The map shows the Mediterranean Sea, the Balkans, and parts of North Africa and the Middle East. A thick red arc connects Rome and Constantinople, indicating a communication or trade route. Five cities are marked with blue starburst icons and labeled in blue boxes: Rome, Constantinople, Antioch, Jerusalem, and Alexandria.

Rome

Constantinople

Antioch

Jerusalem

Alexandria



A satellite map of the Eastern Roman Empire (Byzantine Empire) in the 5th century AD. The empire's extent is shown by a thick red line that follows the coast of the Mediterranean Sea, from the Iberian Peninsula in the west, through North Africa, the Levant, and the Balkans, ending in the Black Sea. Major cities are marked with blue starburst icons and labeled in blue boxes: Rome, Constantinople, Antioch, Jerusalem, and Alexandria. The map shows the Mediterranean Sea in the center, surrounded by Europe to the north and west, and Africa to the south and east. The land is depicted in shades of green and brown, while the sea is dark blue.

Rome

Constantinople

Antioch

Jerusalem

Alexandria



Rome

A satellite map of the Eastern Roman Empire (Byzantine Empire) is shown. The map includes labels for four major centers: Rome, Constantinople, Antioch, and Alexandria. Each label is in a blue box with a white starburst icon next to it. Two red arcs are drawn on the map: one connecting Rome and Constantinople, and another connecting Constantinople and Alexandria. A large blue box at the bottom contains the text 'Allegorizes scripture'. A smaller blue box in the center-right contains the text 'Historical / Literalists'.

Constantinople

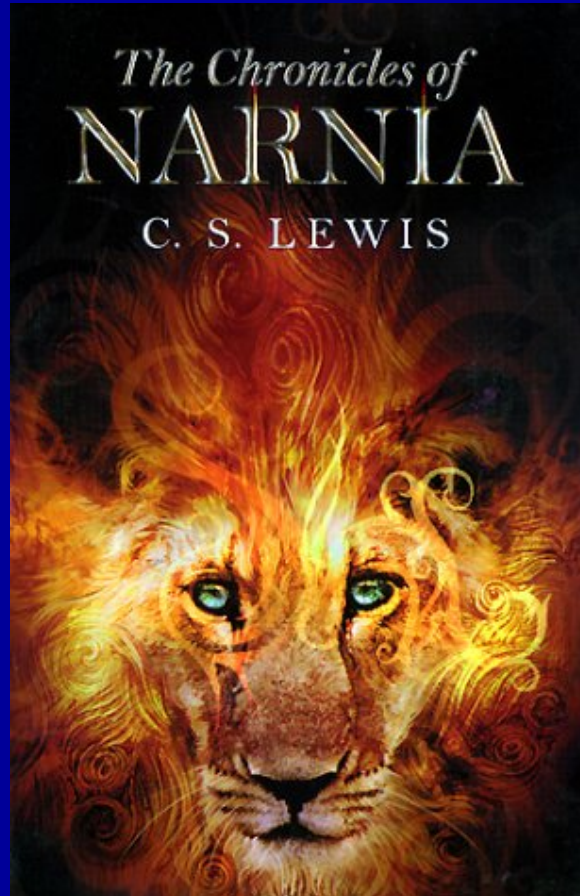
Antioch

Historical / Literalists

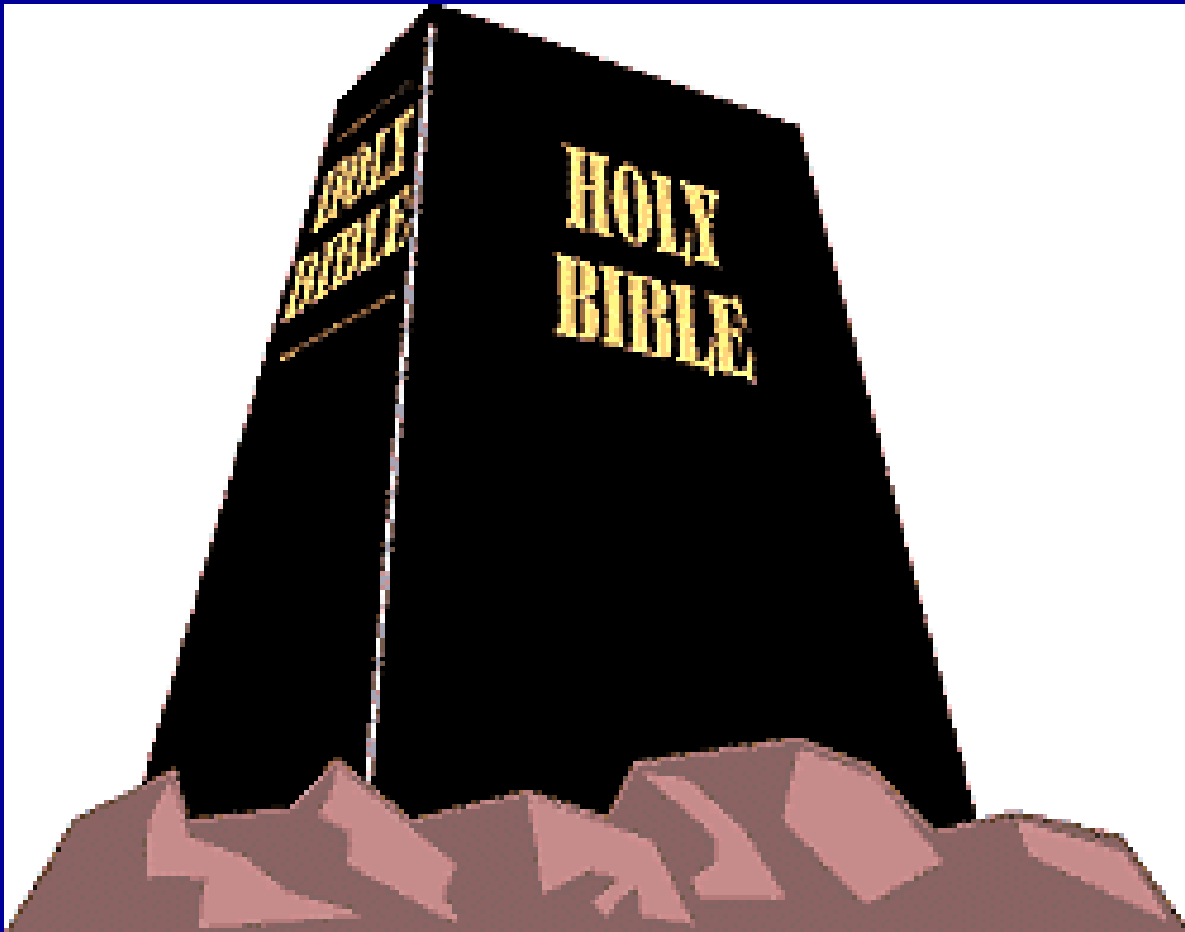
Alexandria

Allegorizes scripture

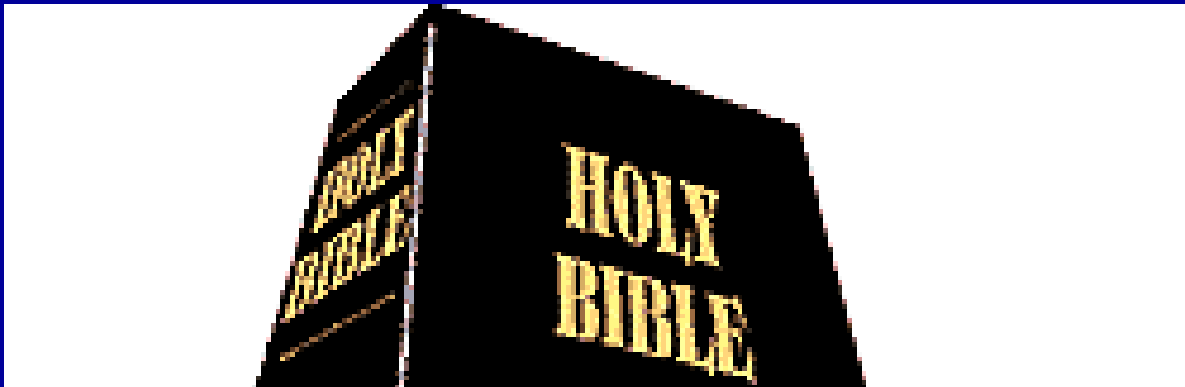
Allegory - Chronicles of Narnia



Allegory - Paul in Galatians?



Allegory - Paul in Galatians?



, “It is written that Abraham had two sons.... These things may be taken figuratively, for the women represent two covenants. One covenant is from Mount Sinai and bears children who are to be slaves: This is Hagar...and corresponds to the present city of Jerusalem.... But the Jerusalem that is above is free, and she is our mother” (Gal. 4:22-26).

A satellite map of the Eastern Mediterranean, showing the Italian Peninsula, the Balkans, the Middle East, and parts of North Africa. The map is used as a background for a diagram. Four blue rectangular labels are placed over the map, each with a white starburst icon to its right. A fifth blue rectangular label is at the bottom, without a starburst icon.

Rome

Constantinople

Antioch

Historical / Literalists

Alexandria

Allegorizes scripture



NATURE OF JESUS

G E O G R A P H Y

Arius Jesus Created by God



Arius Jesus Created by God



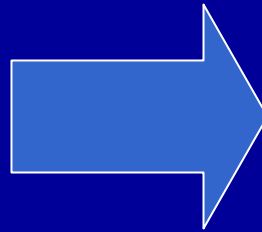
**NO!!!! Council of Nicea and
Constantinople - Jesus is 100% God!**



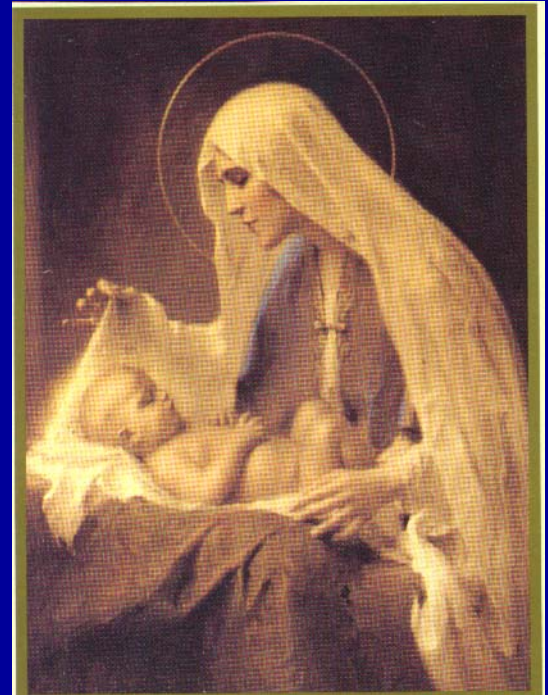
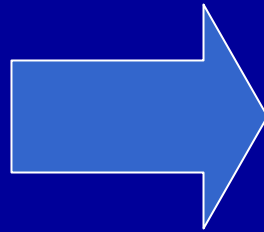
How human
was Jesus?

Jesus
is God

Jesus
is God

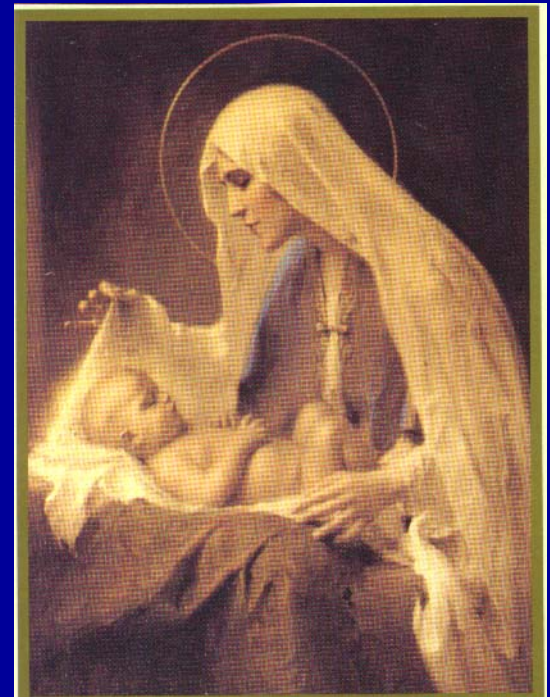
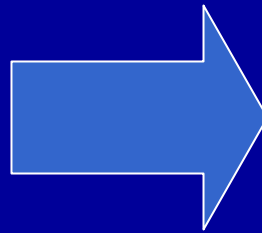


Jesus
is God



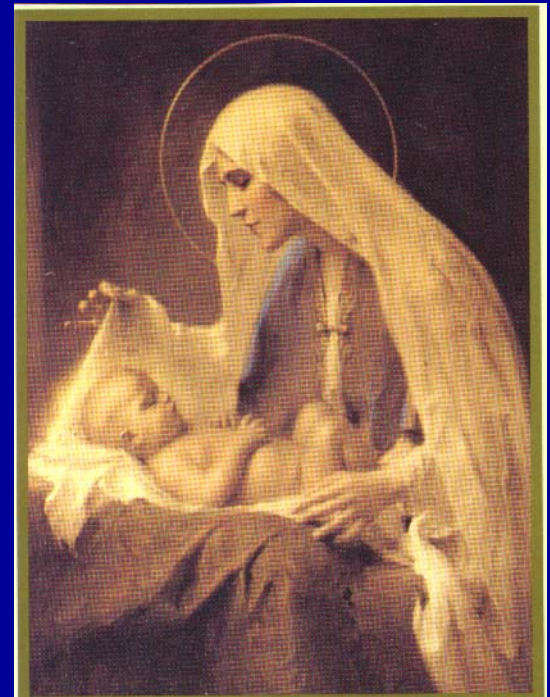
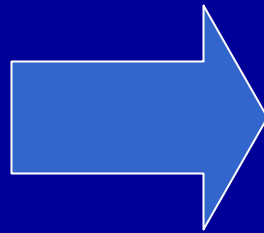
God's mind or
Man's?

Jesus
is God



God's mind or
Man's?

Jesus
is God

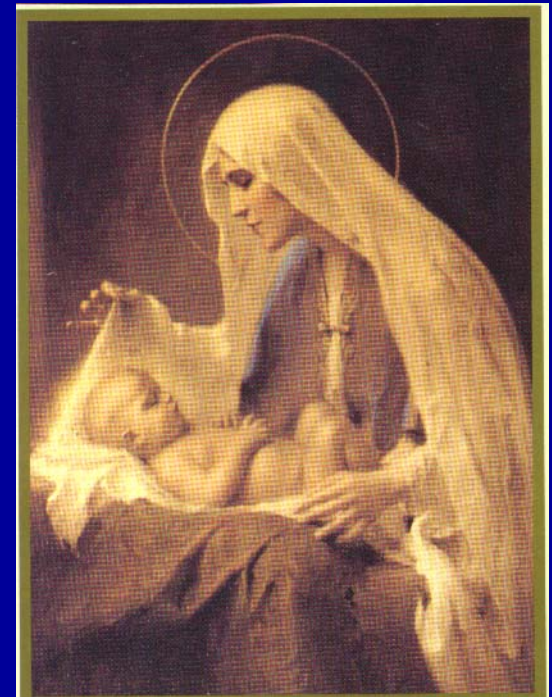
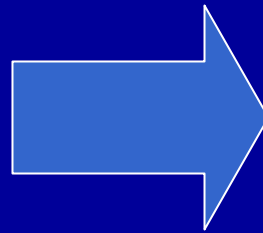


God's emotions or
Man's?

God's mind or
Man's?

God's will power
or Man's?

Jesus
is God



God's emotions or
Man's?



Does Jesus
score a 1600
on the SAT?



Antioch:



Antioch:

Jesus is 100%
human and 100%
God

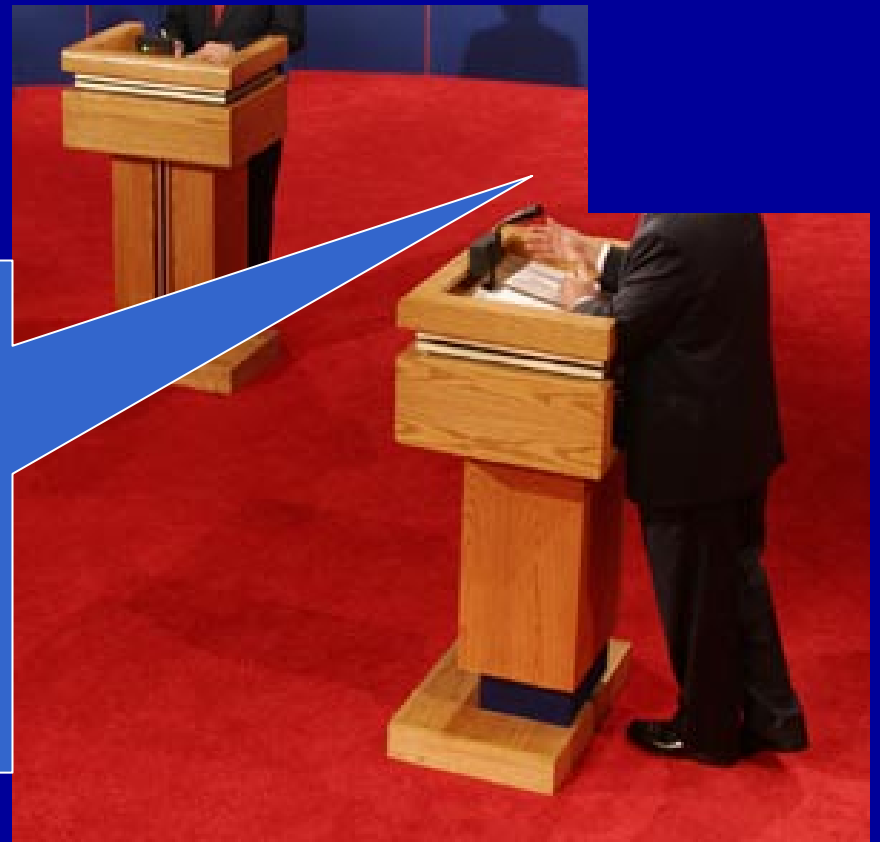


Antioch:

Jesus is 100%
human and 100%
God

Alexandria:

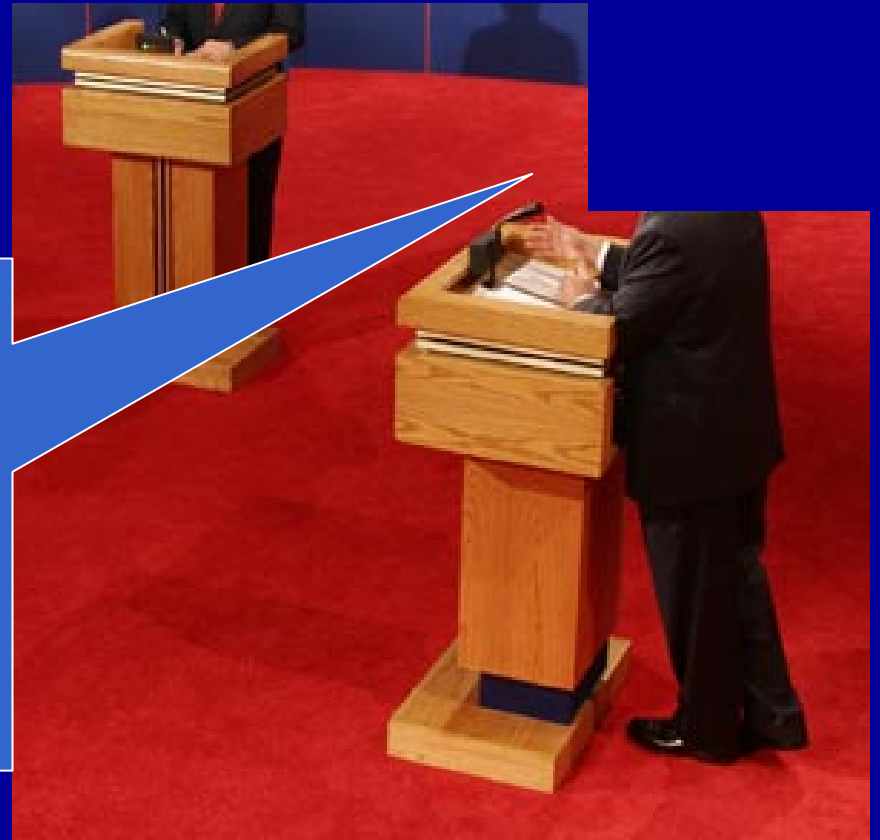
Jesus is 100%
God and is man
too



Antioch:

Jesus is 100%
human and 100%
God

Alexandria:

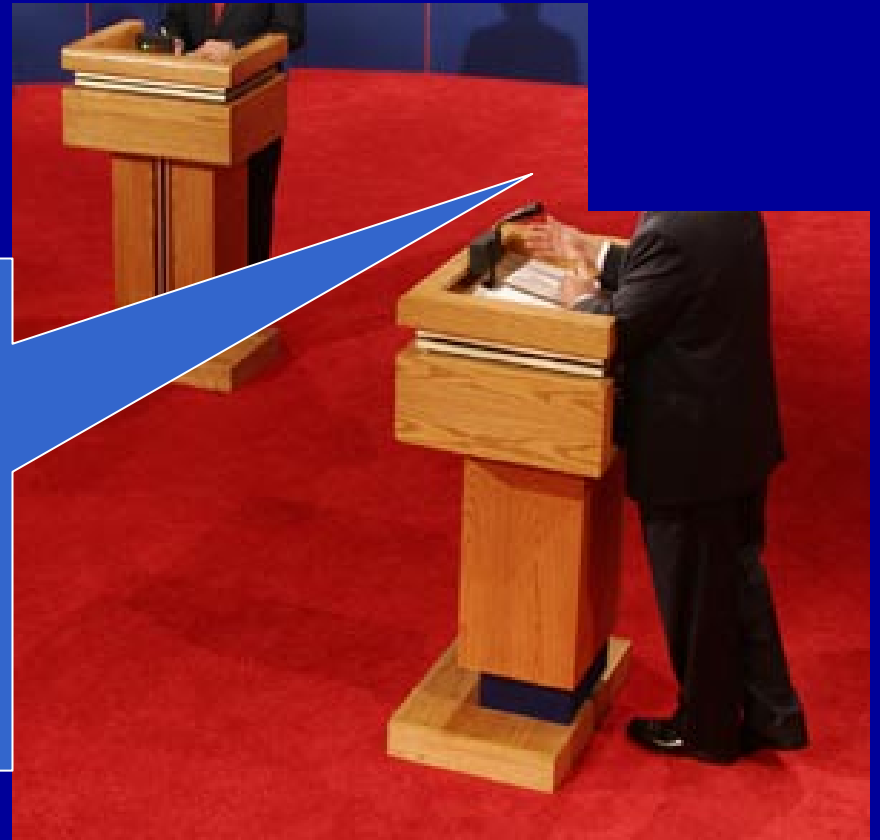


Antioch:

Jesus is 100%
human and 100%
God

Alexandria:

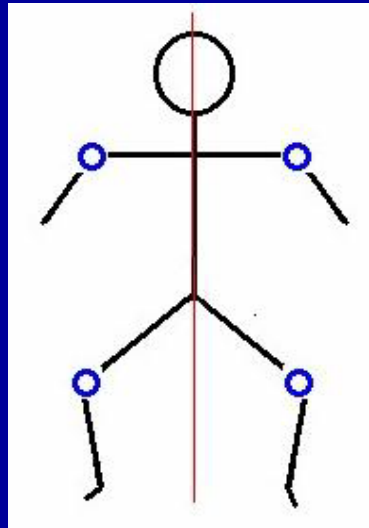
Jesus is 100%
God and is man
too



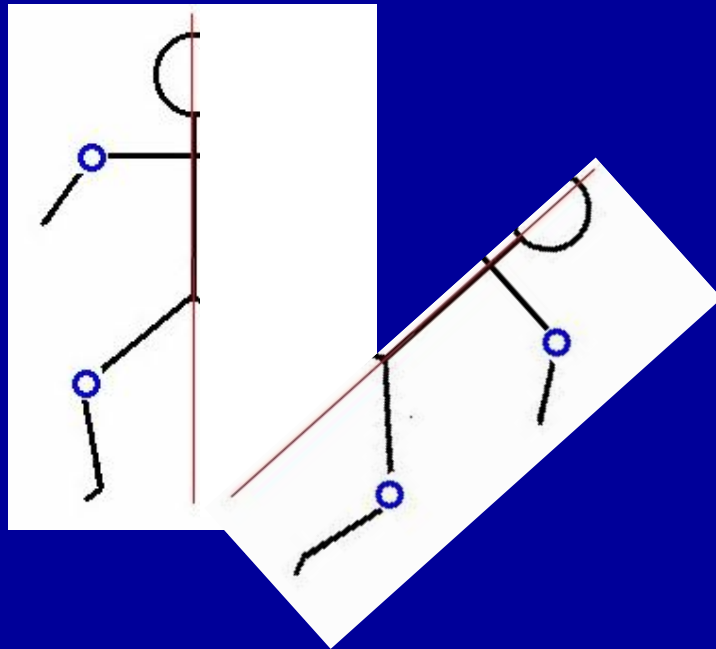


More at play
than just Jesus

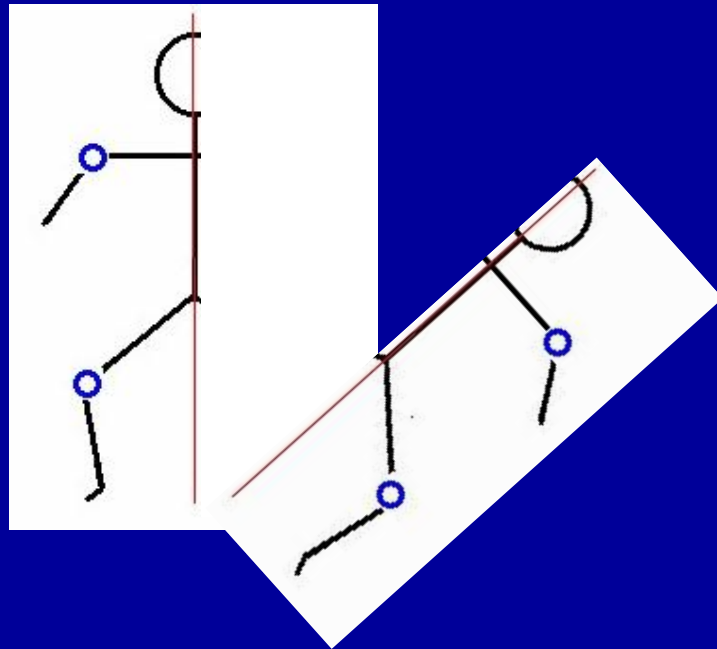
Consider Adam and the fall of man



If only half of man fell ...

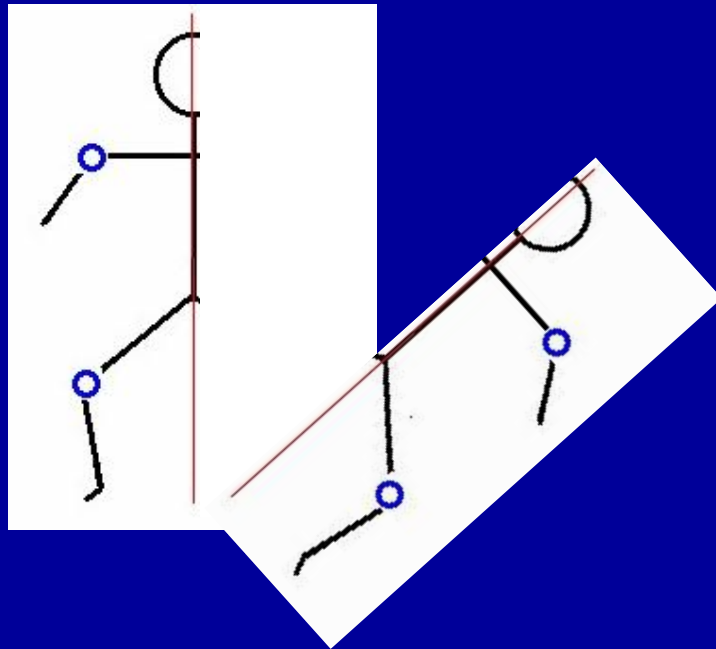


If only half of man fell ...

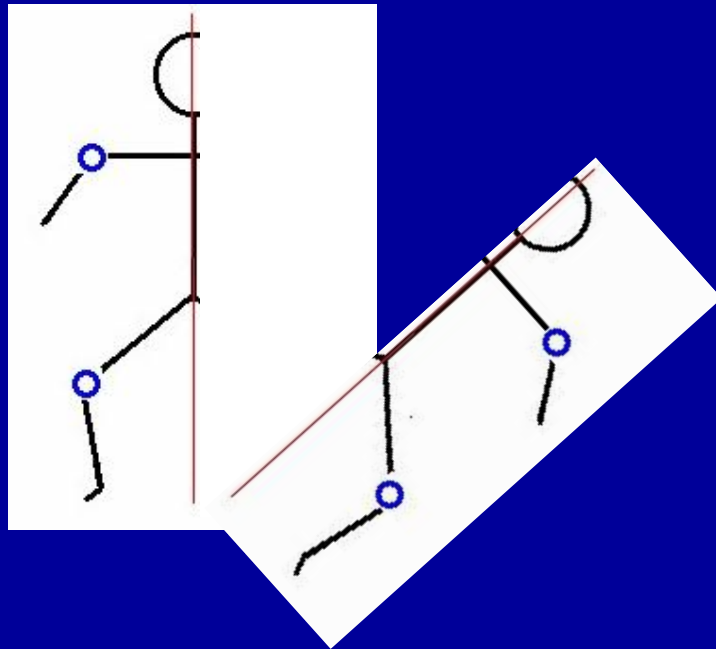


Than a half human Jesus can
save us

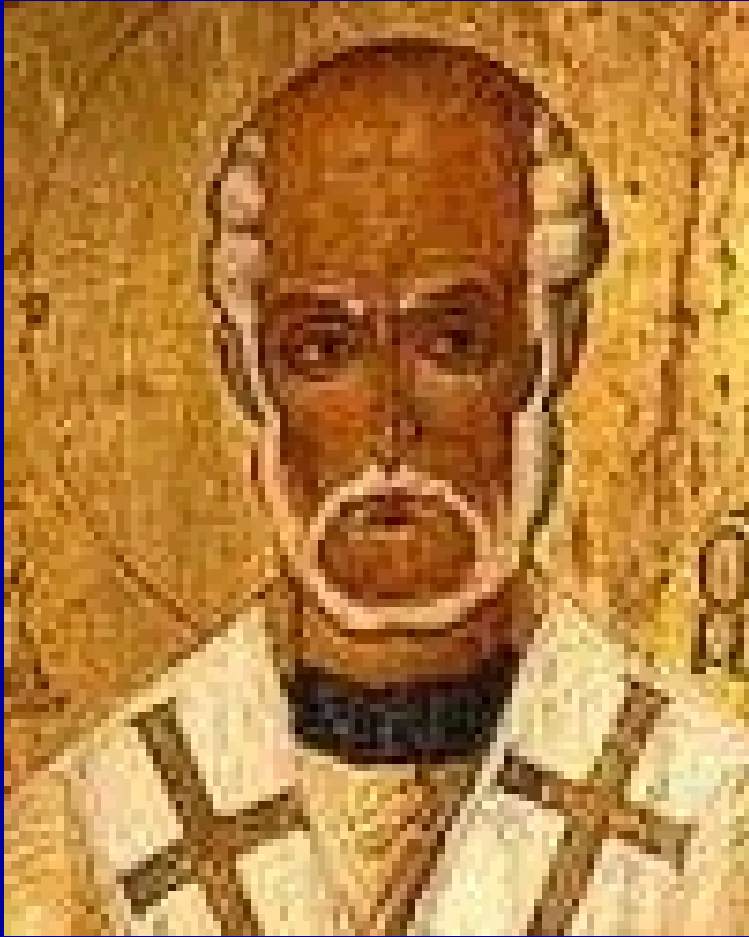
But if all of man fell...



But if all of man fell...



Than a only a fully human
Jesus saves



Nestorius: Bishop
of Constantinople



“Don’t call Mary
“*Theotokos*”

Nestorius: Bishop
of Constantinople



“Don’t call Mary
“*Theotokos*”
 (“*God Bearer*”)

Nestorius: Bishop
of Constantinople



“Christ bearer”
not
“God Bearer”



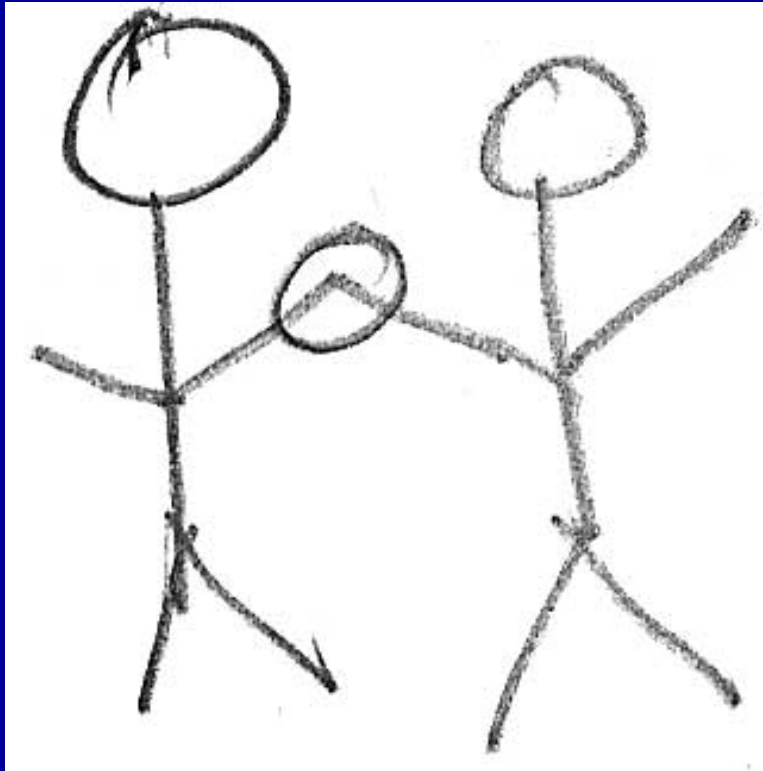
Cyril of
Alexandria
goes to
work



Cyril plays
Nestorius like
a puppet



Cyril commits
Nestorius to a
bad position
in writing



Nestorius has
two people ...
Jesus and
Christ



Finally a
Council in
Ephesus



Nestorius is
deposed;
Rome and
Alexandria
unite



A resolution
waits until
Chalcedon
in 451



Rise of the
Roman Papacy
ahead



Michael Card



Michael Card



To The Mystery

*When the Father long to
show
The love He wanted us to
know
He sent His only Son and
so
Became a holy embryo*

*That is the Mystery
More than you can see
Give up on your pondering
And fall down on your
knees*

Michael Card



*A fiction as fantastic and
wild*

*A mother made by her
own child*

*A hopeless babe who cried
Was God Incarnate and
man deified*

*Because the fall did
devastate*

*Creator must now recreate
So to take our sin*

*Was made like us so we
could be like him*

Points for Home

- “In the beginning was the word...and the word was God... and the word became flesh and dwelt among us” (Jn 1:1, 14).

Points for Home

- “In the beginning was the word...and the word was God... and the word became flesh and dwelt among us” (Jn 1:1, 14).
- “For is the many died by the trespass of the one man [Adam], how much more did God’s grace and the gift that came by the grace of the one man, Jesus Christ, overflow to the many!” (Rom. 5:15-16)

Points for Home

- “For we do not have a High Priest who is unable to sympathize with our weaknesses, but we have one who has been tempted in every way, just as we are — yet was without sin” (Heb. 4:15).

Points for Home

- “For we do not have a High Priest who is unable to sympathize with our weaknesses, but we have one who has been tempted in every way, just as we are — yet was without sin” (Heb. 4:15).
- The mystery: God “dwells in unapproachable light, whom no man has even seen or can see” (1 Tim 6:16); yet “He who has seen me has seen the Father” (Jn 14:9).